



WINDSOR

Island Resort

ENG



Why Orlando

- Most Visited City in the US with 80 Million Annual Visitors
 - Year Round Rental Season with Large Variety of Online Vacation Rental & Management Booking Sites
- Named One of the Fastest Growing Cities in the US by Forbes Magazine
 - Major Industries: Aerospace & Defense, Tourism, Technology
 - Second Largest Convention Center in US
- Expansive International Airport
 - Premier Global Gateway with over 135 Domestic and International Destinations
 - #1 Ranked Airport in FL, 10th Busiest Airport in US
- Home to Internationally known Walt Disney World Resort® and Theme Parks, Universal Orlando®, SeaWorld Orlando®, LEGOLAND Florida Resort® and Much More!
- World Class Shopping and Entertainment
- Favorable Climate Year Round
- Close Proximity to East and West Coast Beaches





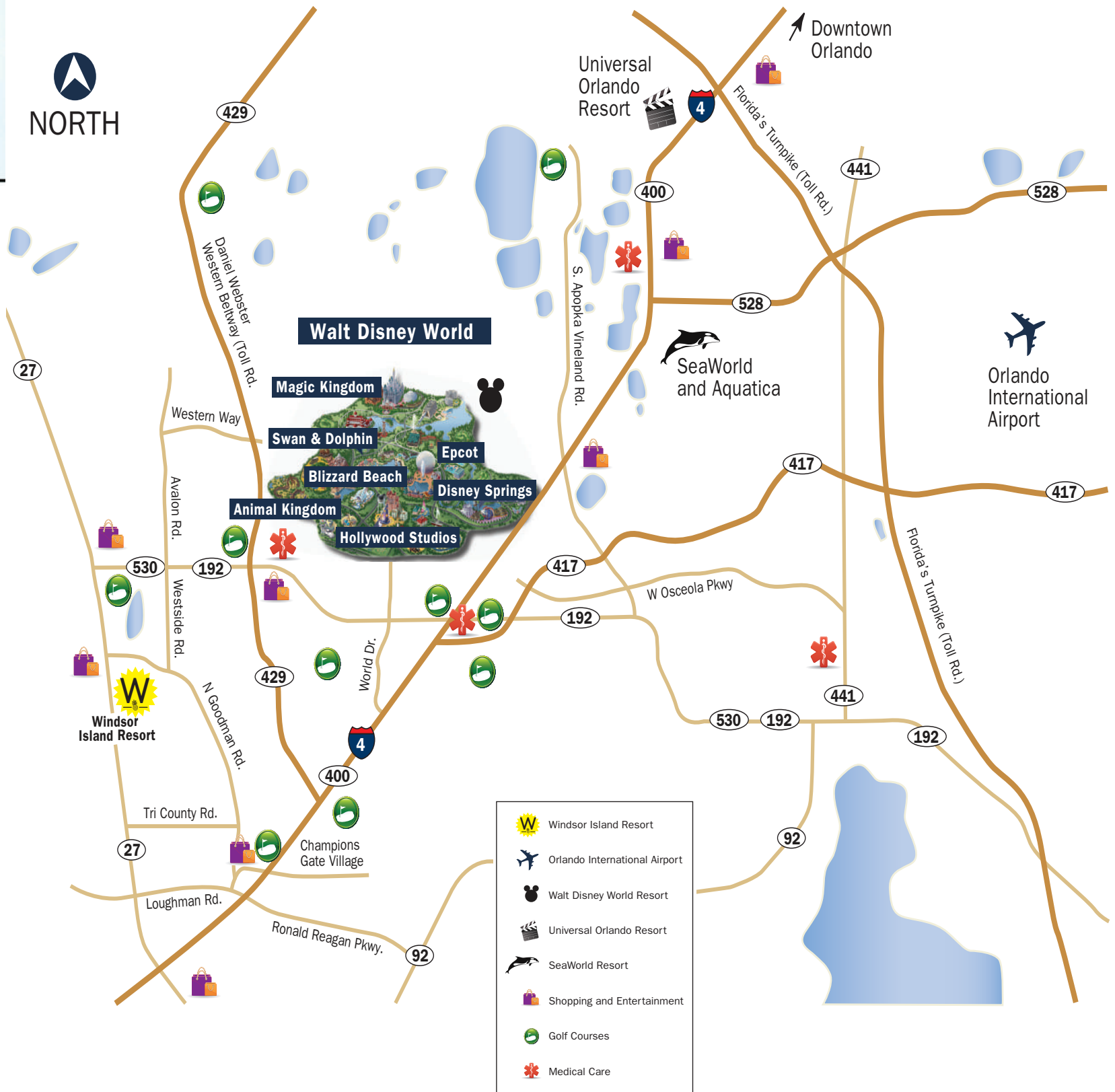
Why Windsor Island Resort

- 617 Unit Master Planned Community
- Resort Amenities On Site
- International Brand Recognition
- 24 Hour Manned Gated Community
- Minutes from World Class Attractions
- Floor Plans to Maximize Rentals/Returns
- Key Home Features
 - Shingle Roof
 - Private Heated Pool
 - 5, 6, 7 Bedrooms with 12' x 24' Pool
 - 8, 9, & 10 Bedrooms with 12' x 26' Pool
 - Townhomes with 7.5' x 18' Pool
 - Brick Paver Driveways and Pool Decks
 - Stainless Steel Appliances
 - Owners Storage Closet
 - Granite and Tile Throughout Kitchens and All Bathrooms
 - Blinds Included
 - Covered Lanai with Child Safety Fence
 - Washer & Dryer



Perfectly Located

Windsor at Westside is Perfectly Located 8 Miles from Disney



Unparalleled Amenities

Our residents fall in love with where they vacation. And how they vacation. Windsor Island Resort offers unparalleled short-term rental vacation homes designed just for you!

Included in Windsor Island Resort homeowner association fees are the following:

Home Owners Association Includes:

- Fully Maintained Landscaping Including Lawn Irrigation
- High Speed Internet and Cable TV
- Daily Valet Garbage Disposal

For Home Owners Association Fees, Please Contact a Sales Consultant.

Location, Location, Location

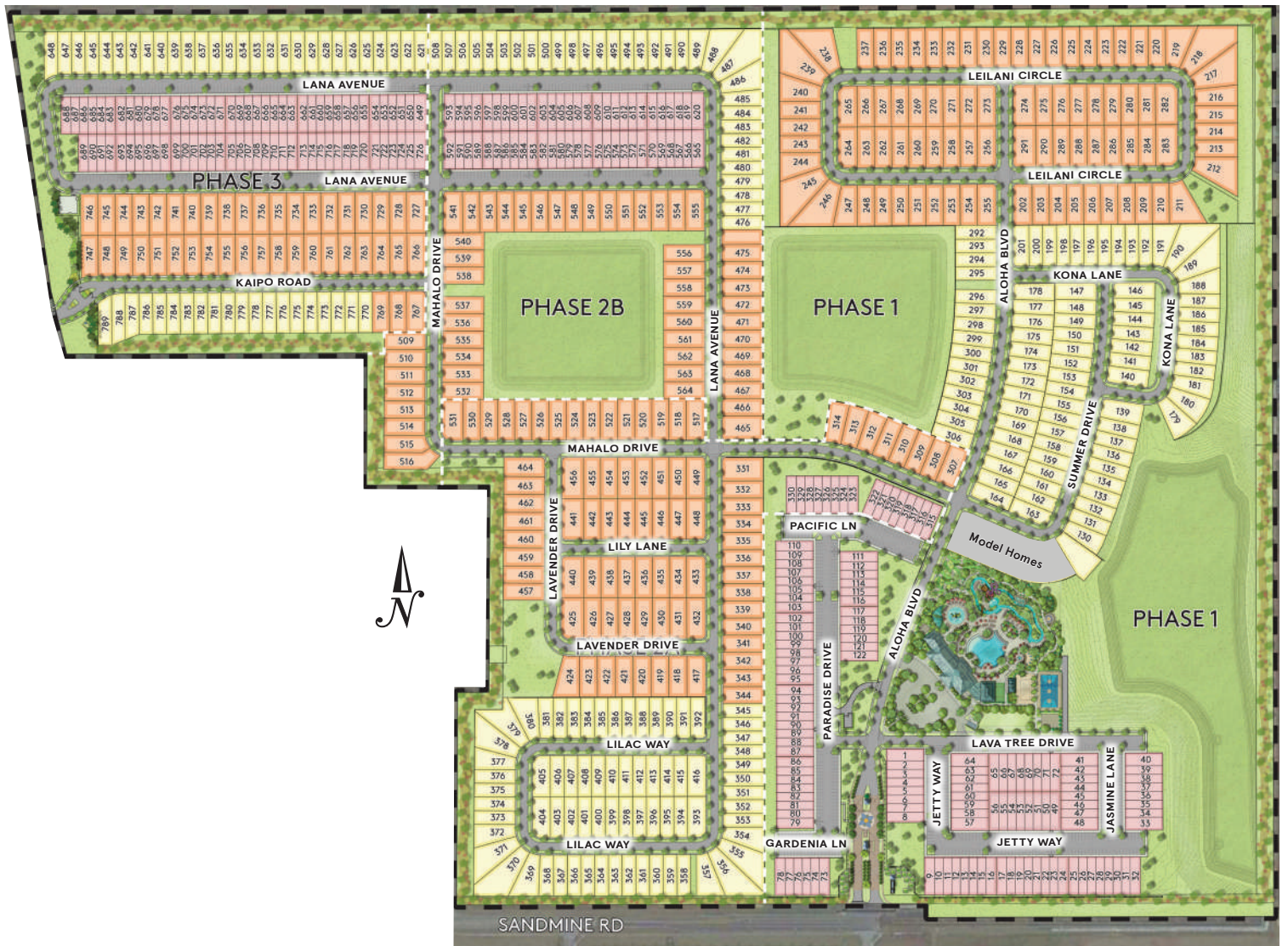


Windsor Island Resort Amenities



Site Map

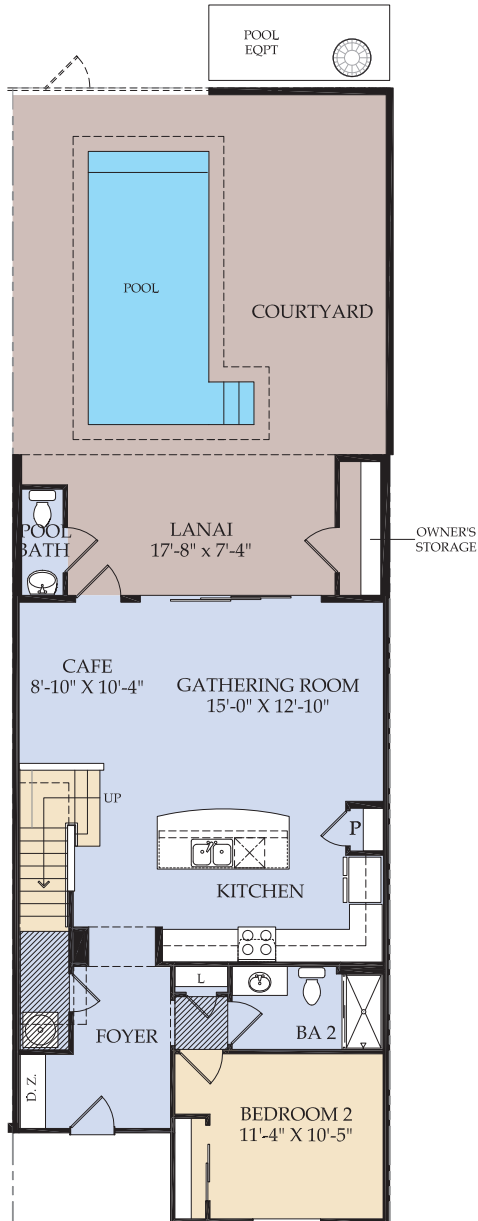
Windsor at Westside is Perfectly Located 8 Miles from Disney



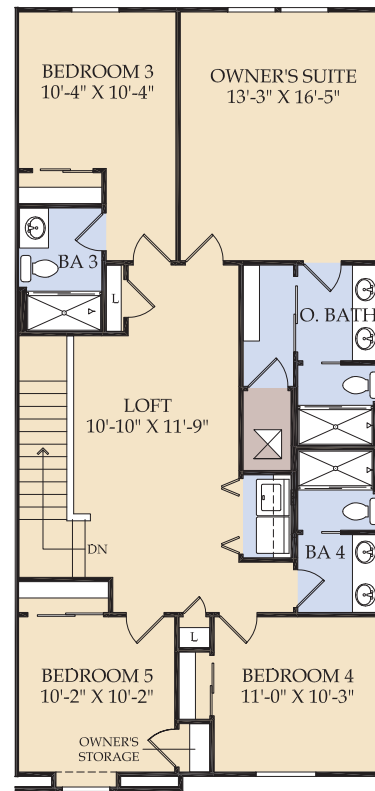
Castaway Townhome

210 Square Meters - 2,263 Square Feet | 5 Bedrooms | 4.5 Baths

First Floor



Second Floor



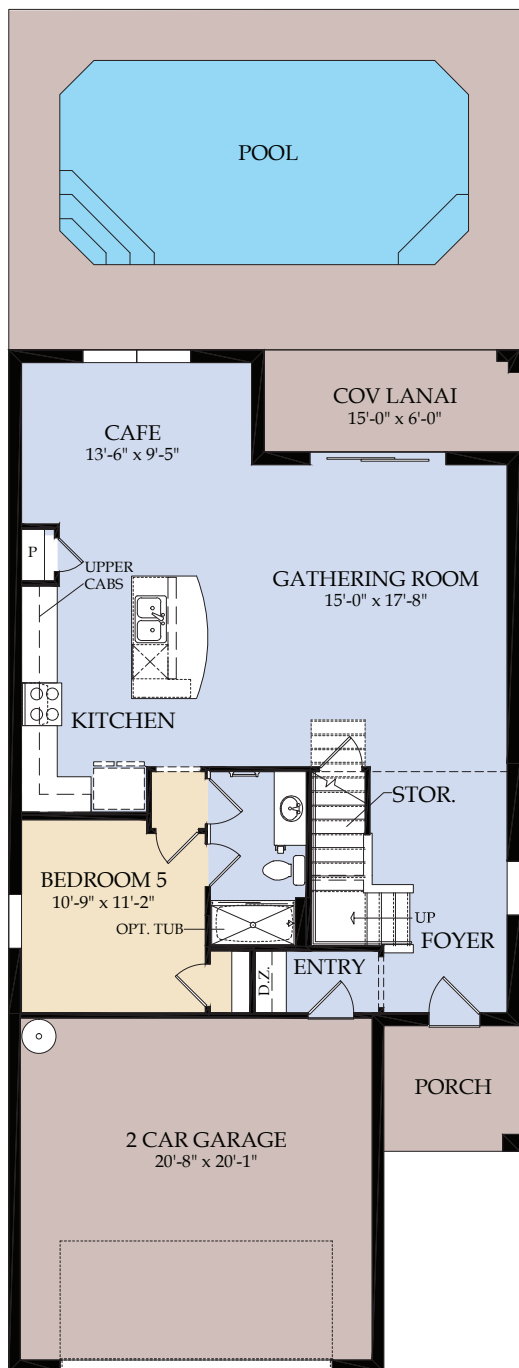
Interior and
Exterior Units
Available



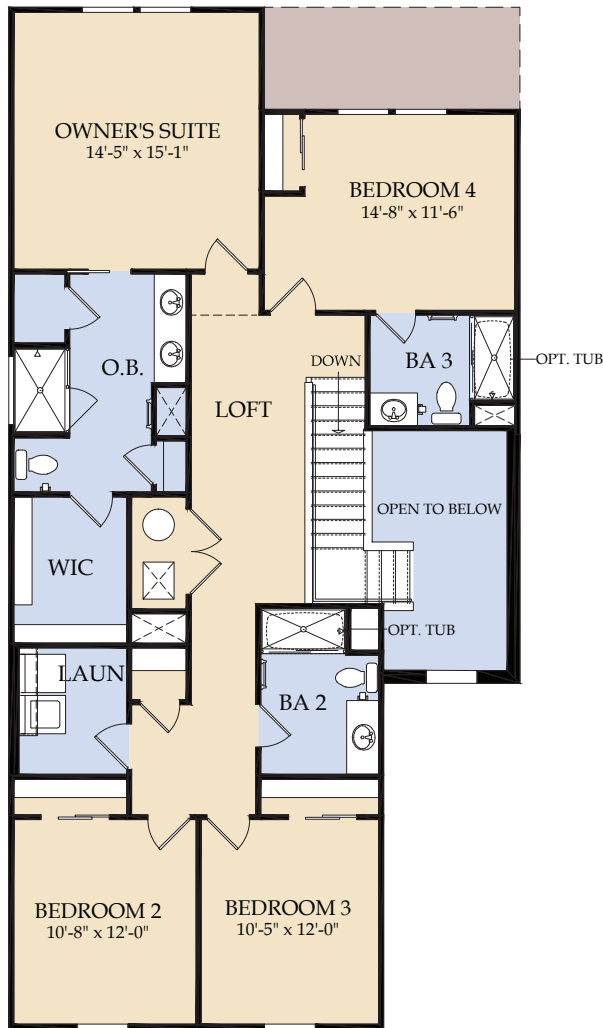
Winstone

231 Square Meters - 2,490 Square Feet | 5 Bedrooms | 4 Baths

First Floor



Second Floor



Winstone Exteriors



A (FM1A)



B (FM2A)



C (FM2C)

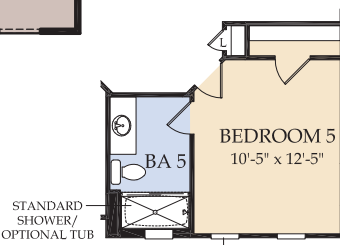
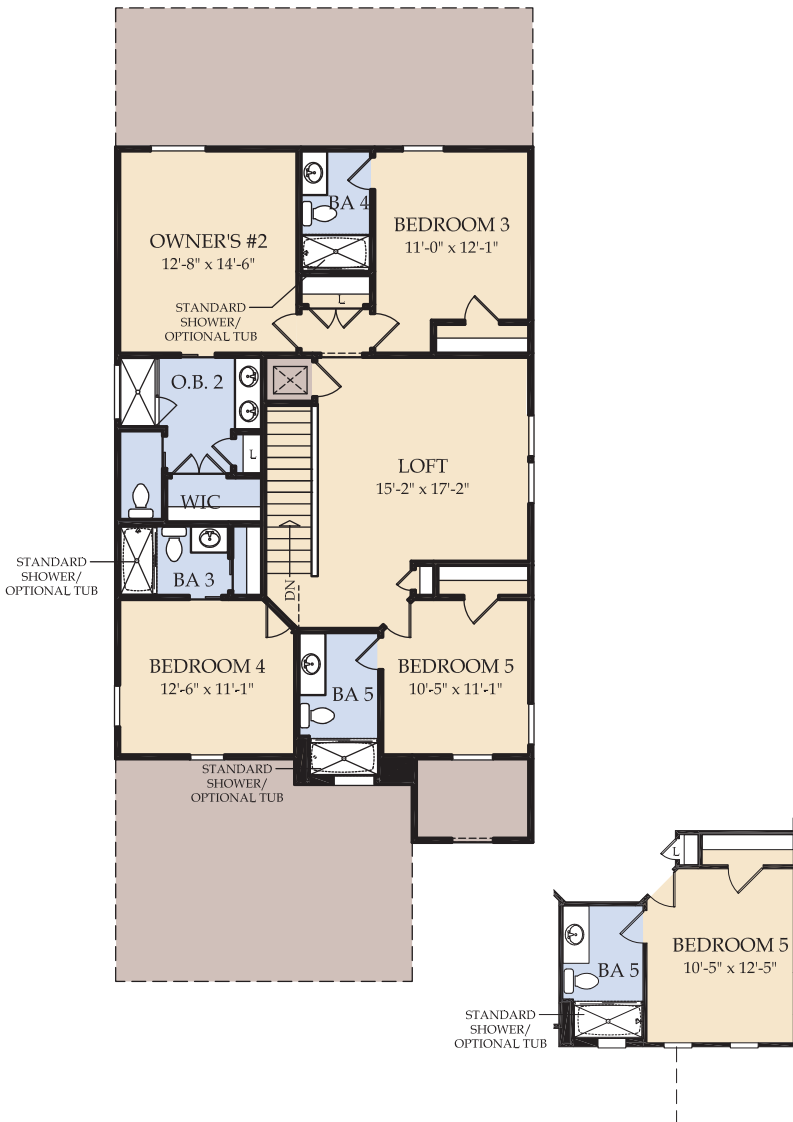
Lakeshore

240 Square Meters - 2,587 Square Feet | 5 Bedrooms | 5.5 Baths

First Floor



Second Floor



Bedroom 5 and Bath 5 ILO Game Room Option Elevation (FM2C/D)



Lakeshore Exteriors



A (FM2A)



B (FM2B)



C (FM2C)

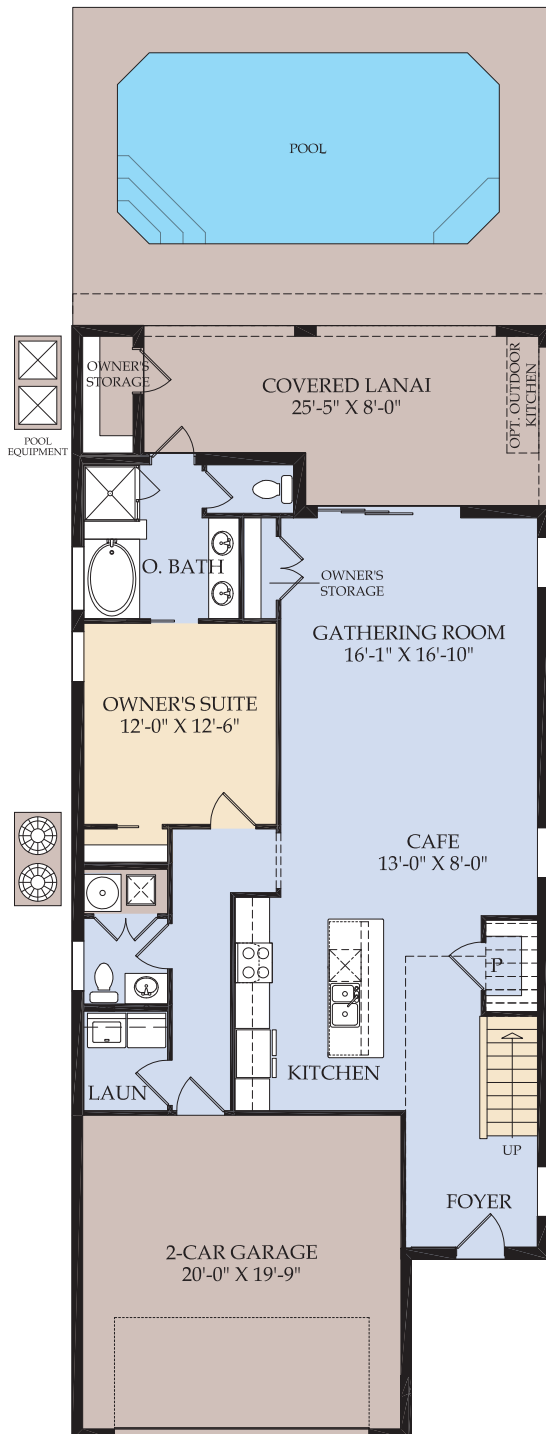


D (FM2D)

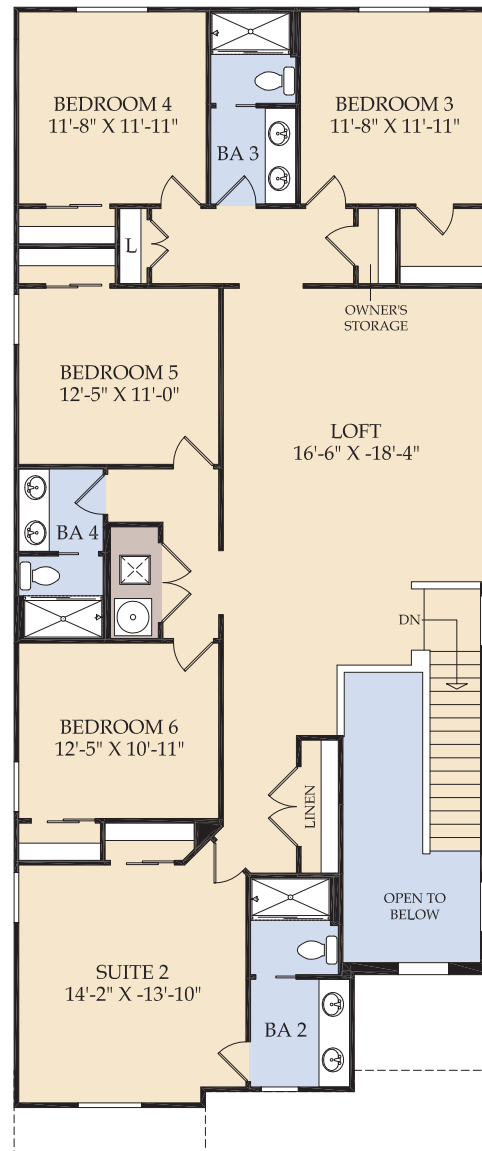
Hideaway

289 Square Meters - 3,117 Square Feet | 6 Bedrooms | 4.5 Baths

First Floor



Second Floor





Hideaway Exteriors



A (FM2A)



B (FM2B)



C (FM2C)

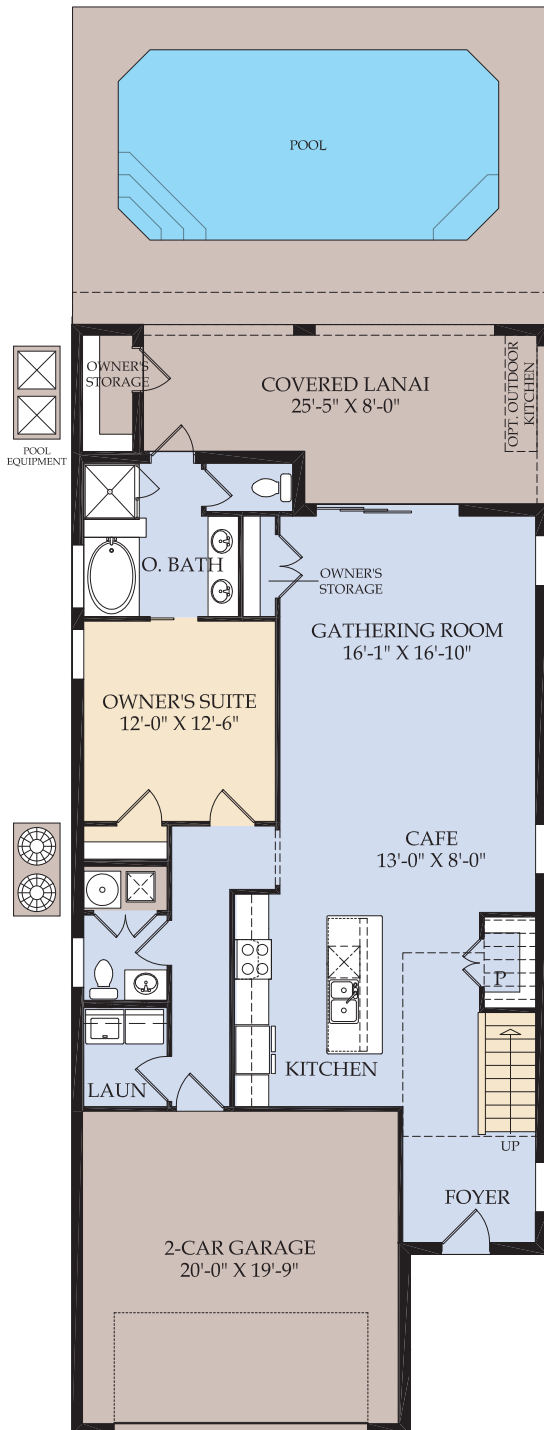


D (FM2D)

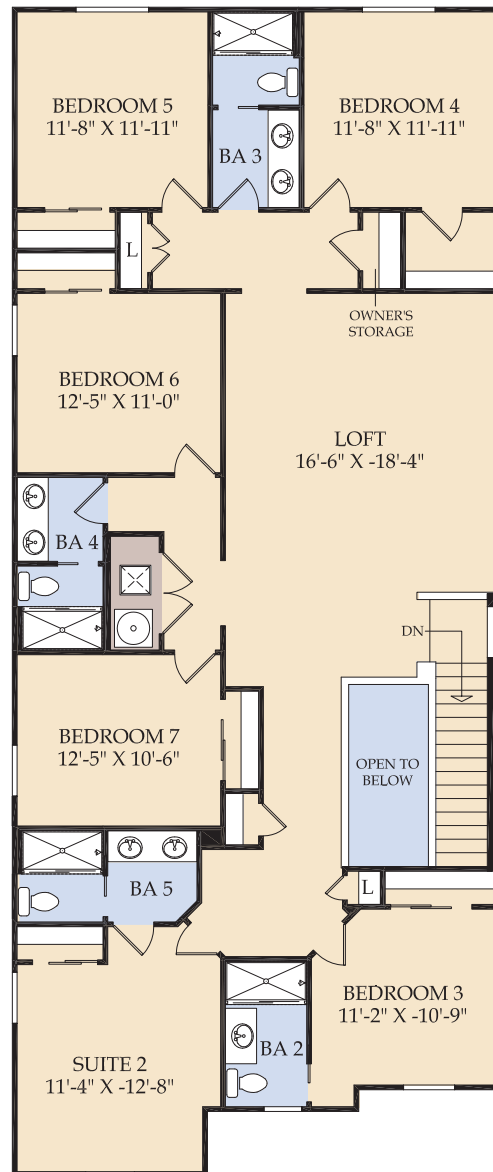
Seashore

304 Square Meters - 3,281 Square Feet | 7 Bedrooms | 5.5 Baths

First Floor



Second Floor





Seashore Exteriors



A (FM2A)



B (FM2B)



C (FM2C)

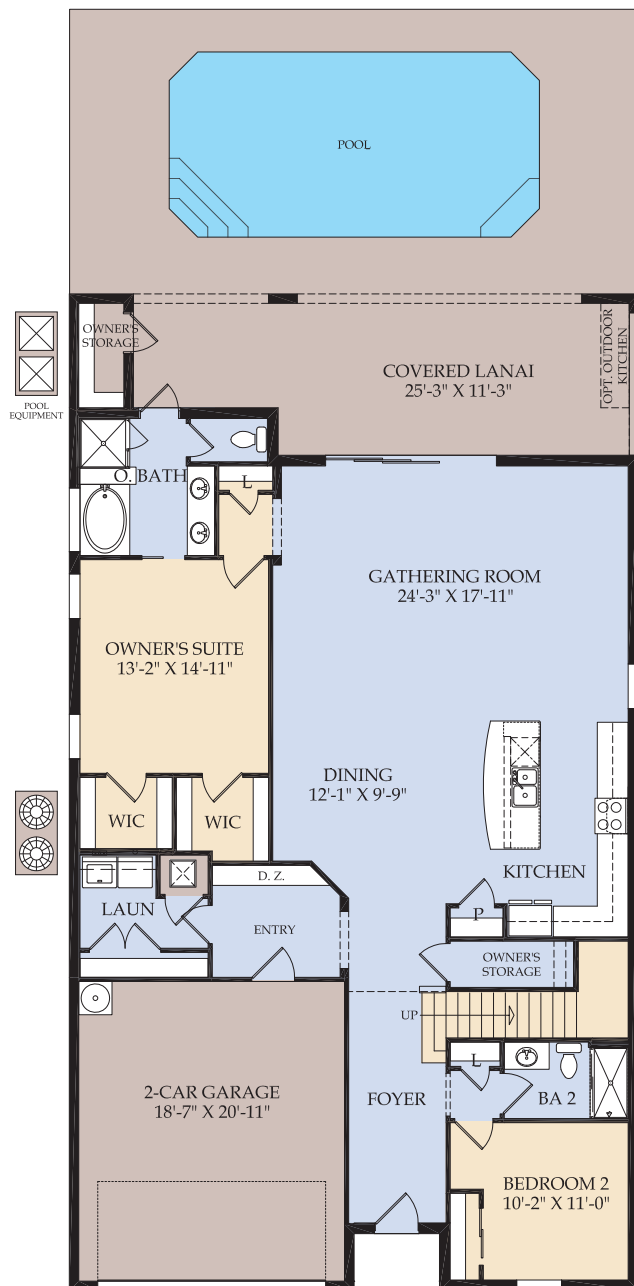


D (FM2D)

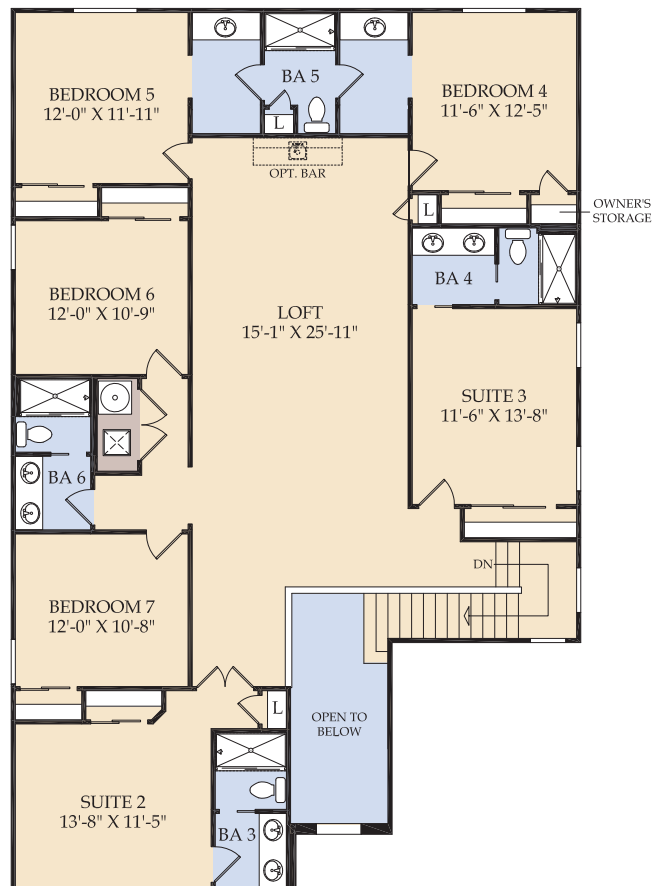
Baymont

374 Square Meters - 4,034 Square Feet | 8 Bedrooms | 6 Baths

First Floor



Second Floor





Baymont Exteriors



A (FM2A)



B (FM2B)



C (FM2C)

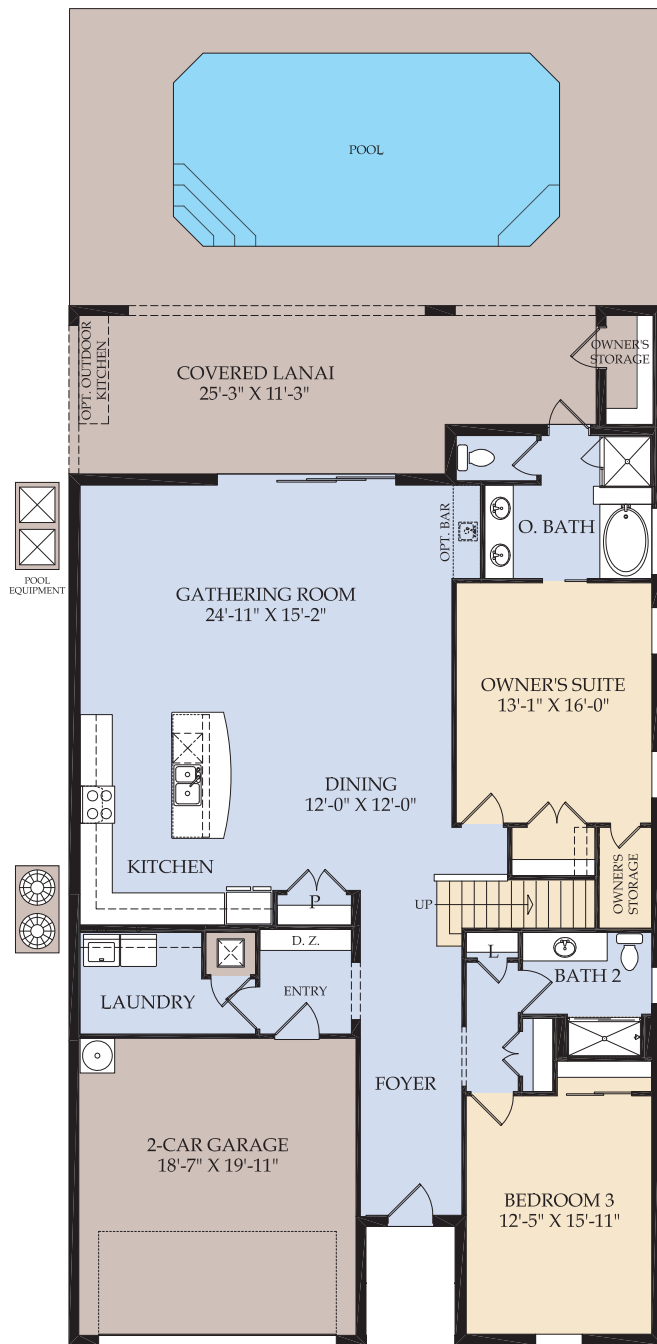


D (FM2D)

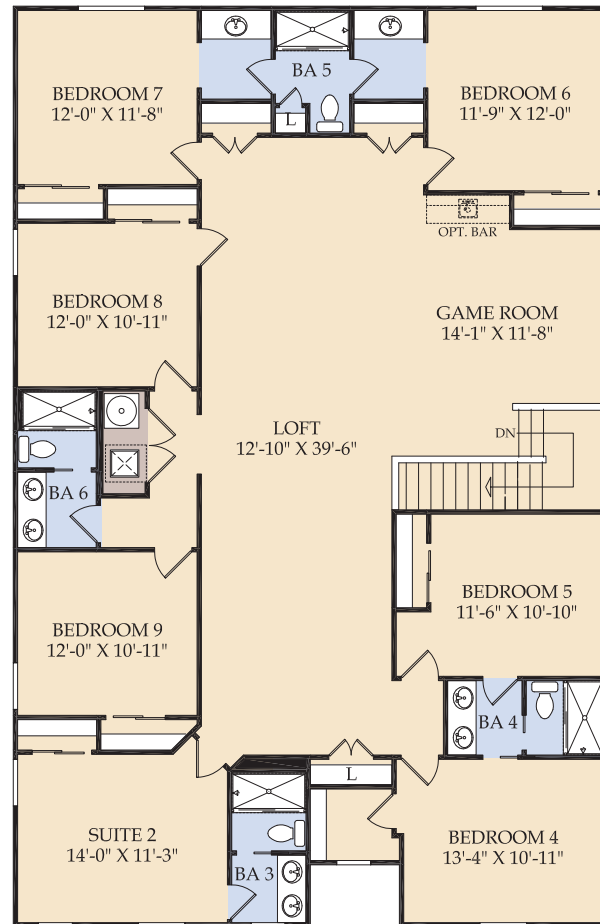
Clearwater

408 Square Meters - 4,398 Square Feet | 9 Bedrooms | 6 Baths

First Floor



Second Floor





Clearwater Exteriors



A (FM2A)



B (FM2B)



C (FM2C)

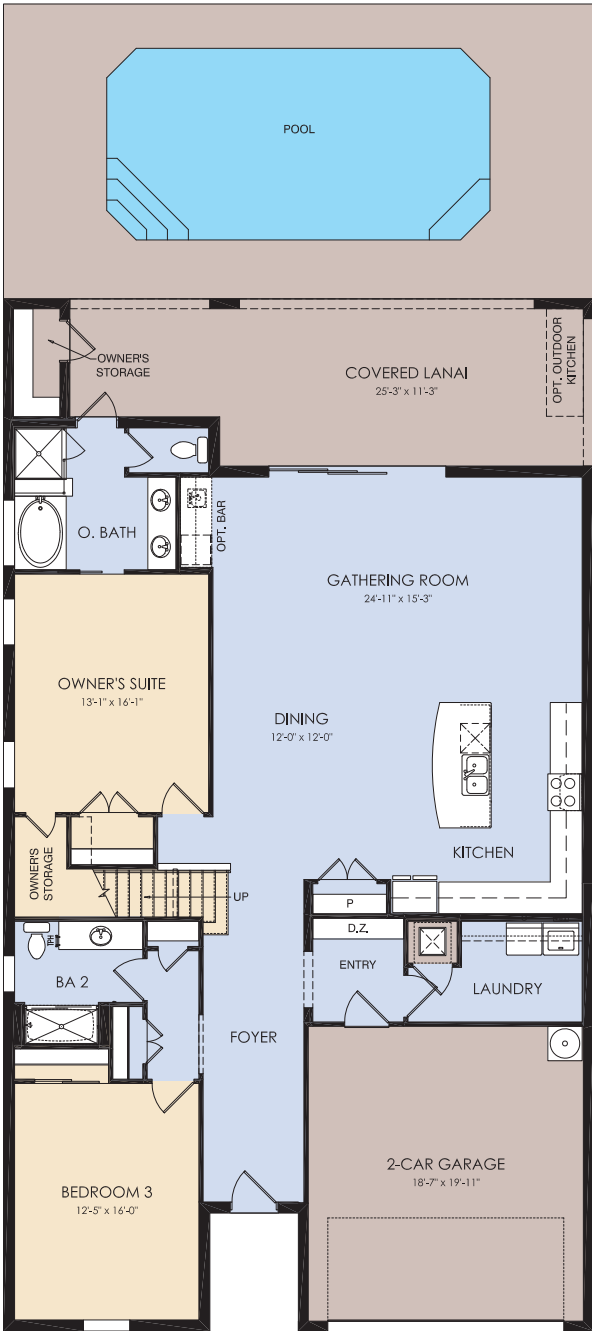


D (FM2D)

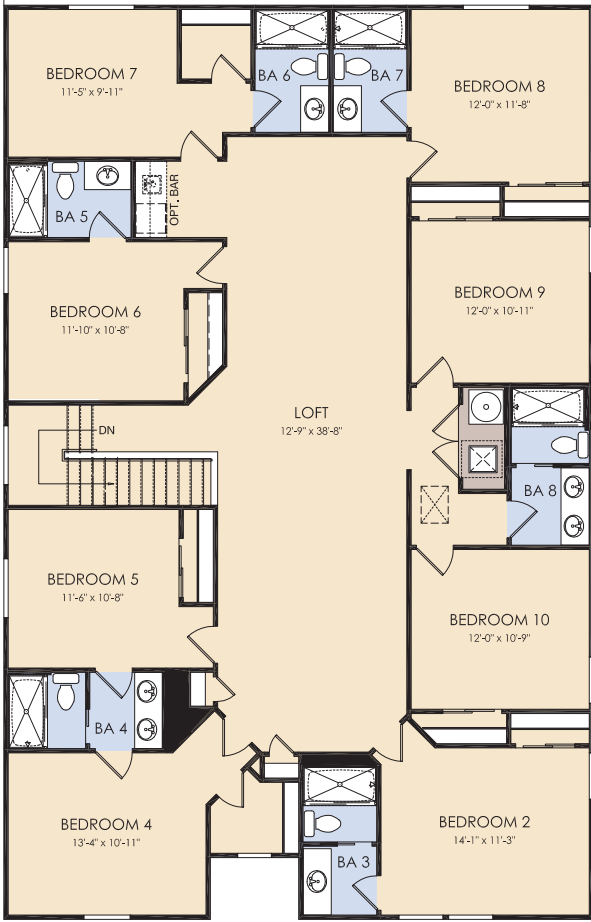
Clearwater Grand

407 Square Meters - 4,383 Square Feet | 10 Bedrooms | 8 Baths

First Floor



Second Floor





Clearwater Grand Exteriors



A (FM2A)



B (FM2B)



C (FM2C)



D (FM2D)



WINDSOR

Island  Resort



Sand Mine Rd and Westside Blvd. Kissimmee, FL 34747 407-867-6954 Pulte.com/WindsorIslandResort