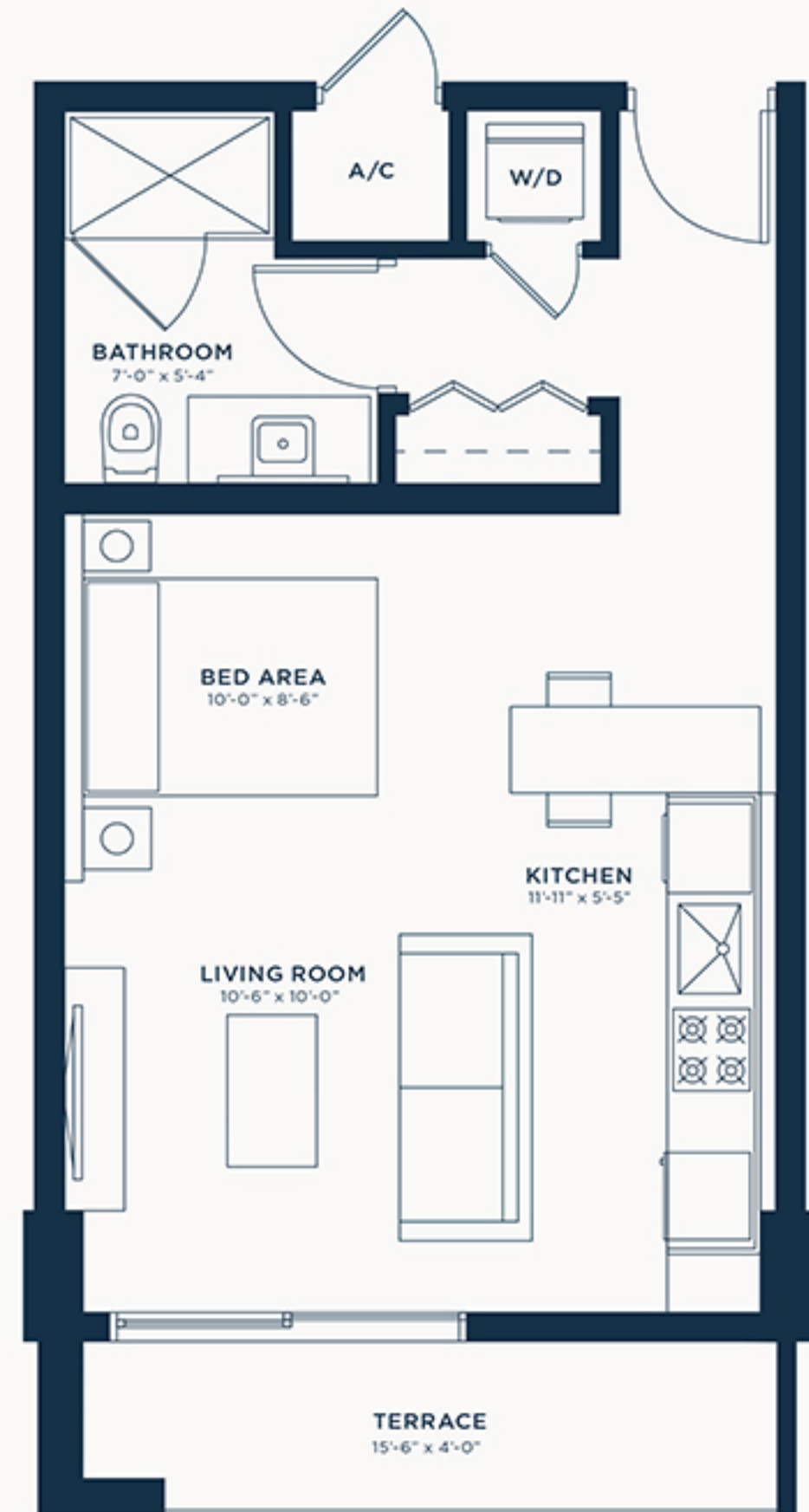
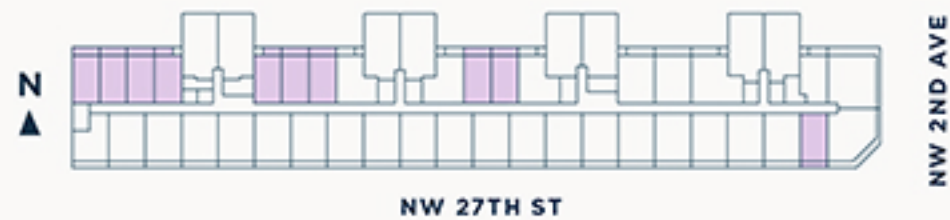




STUDIO TYPE A

Studio | 1 Bath

INTERIOR	479 SF / 45 M2
TERRACE	62 SF / 6 M2
TOTAL	541 SF / 50 M2

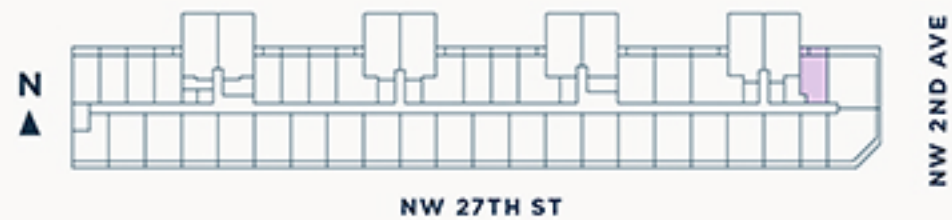




STUDIO TYPE A2

Studio | 1 Bath

INTERIOR	464 SF / 43 M2
TERRACE	55 SF / 5 M2
TOTAL	519 SF / 48 M2



The dimensions stated for this unit floor plan are approximate because there are various recognized methods for calculating the square footage of a unit. The square footage stated here is calculated from the exterior boundaries of the exterior walls to the centerline of interior demising walls without deductions for cutouts, curves, or architectural features. This method typically results in quoted dimensions greater than the dimensions that would be determined by using other accepted methods. The definition of "Unit" and the calculation method to be relied upon is set forth by the Developer, PBN G40 Property Owner, LLC, in Developer's prospectus and the method set forth in the Developer's prospectus may result in a square footage calculation less than the method used here. Consult the Developer's prospectus for information on what is offered with the Unit and the calculation of the Unit square footage and dimensions.



STUDIO TYPE B

Studio | 1 Bath

INTERIOR 624 SF / 58 M2
TERRACE 54 SF / 6 M2
TOTAL 678 SF / 63 M2



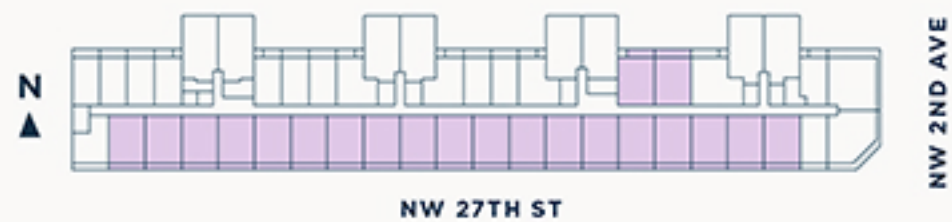
The dimensions stated for this unit floor plan are approximate because there are various recognized methods for calculating the square footage of a unit. The square footage stated here is calculated from the exterior boundaries of the exterior walls to the centerline of interior demising walls without deductions for cutouts, curves, or architectural features. This method typically results in quoted dimensions greater than the dimensions that would be determined by using other accepted methods. The definition of "Unit" and the calculation method to be relied upon is set forth by the Developer, PBN G40 Property Owner, LLC, in Developer's prospectus and the method set forth in the Developer's prospectus may result in a square footage calculation less than the method used here. Consult the Developer's prospectus for information on what is offered with the Unit and the calculation of the Unit square footage and dimensions.



ONE BEDROOM TYPE A

1 Bed | 1 Bath

INTERIOR	638 SF / 59 M2
TERRACE	82 SF / 8 M2
TOTAL	720 SF / 67 M2



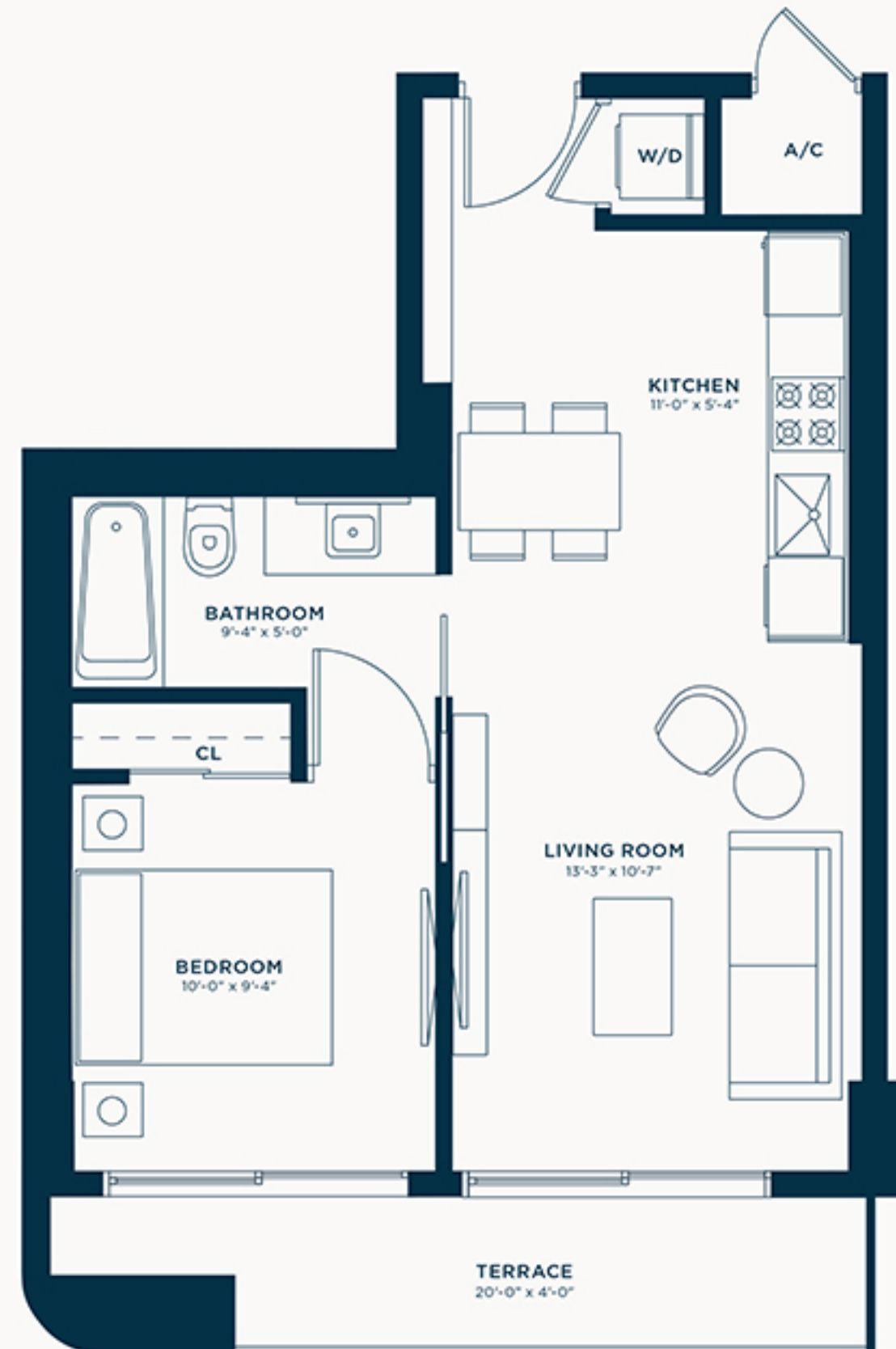
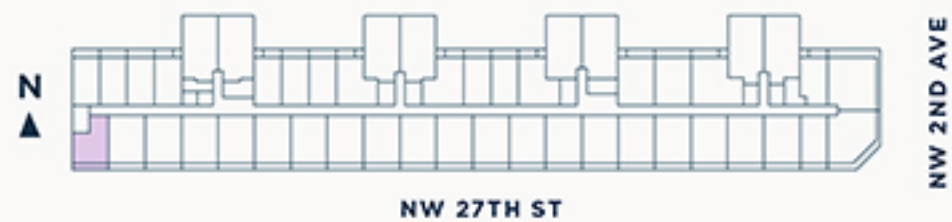
The dimensions stated for this unit floor plan are approximate because there are various recognized methods for calculating the square footage of a unit. The square footage stated here is calculated from the exterior boundaries of the exterior walls to the centerline of interior demising walls without deductions for cutouts, curves, or architectural features. This method typically results in quoted dimensions greater than the dimensions that would be determined by using other accepted methods. The definition of "Unit" and the calculation method to be relied upon is set forth by the Developer, PBN G40 Property Owner, LLC, in Developer's prospectus and the method set forth in the Developer's prospectus may result in a square footage calculation less than the method used here. Consult the Developer's prospectus for information on what is offered with the Unit and the calculation of the Unit square footage and dimensions.



ONE BEDROOM TYPE B

1 Bed | 1 Bath

INTERIOR	528 SF / 49 M2
TERRACE	75 SF / 7 M2
TOTAL	603 SF / 56 M2

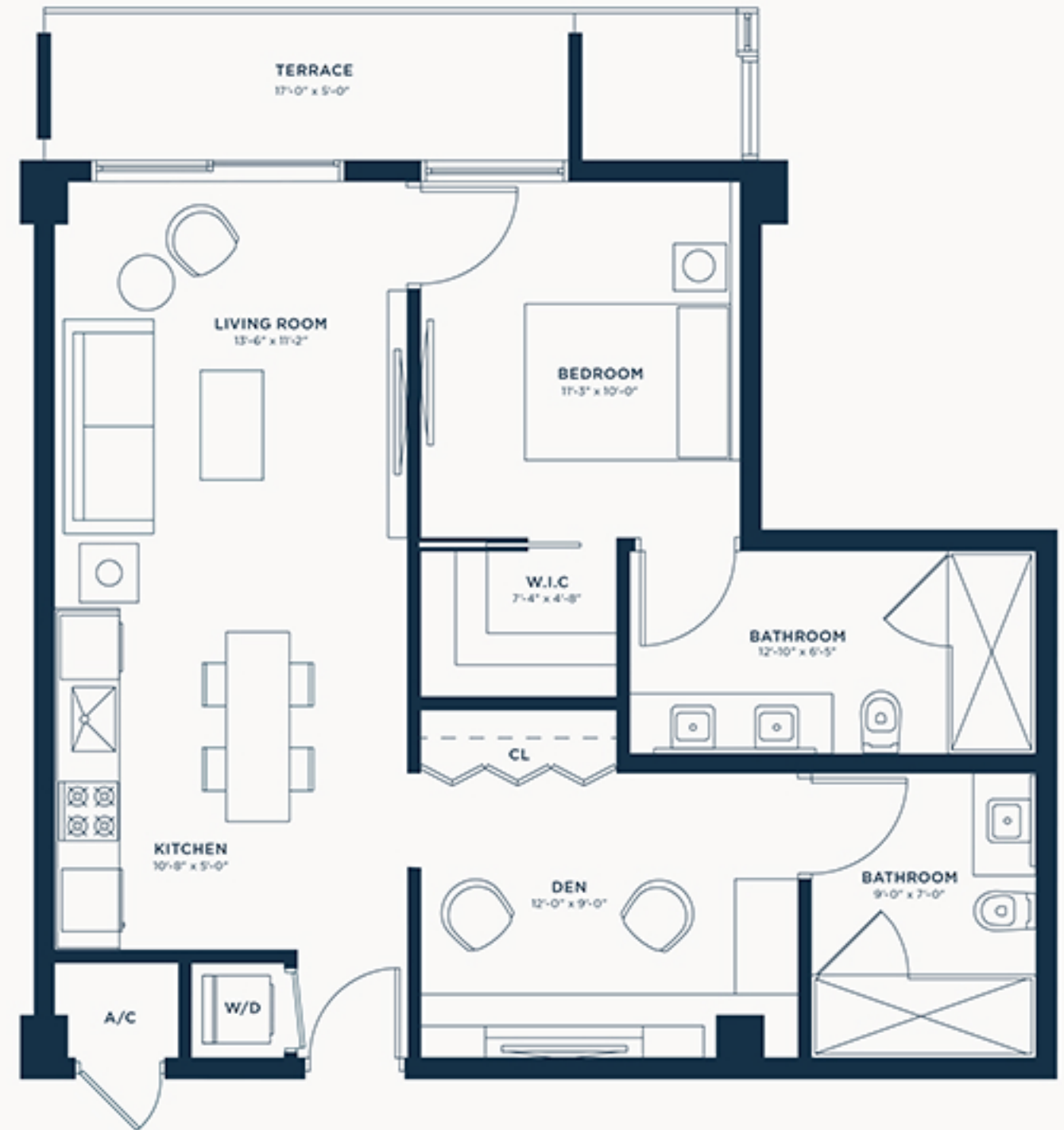
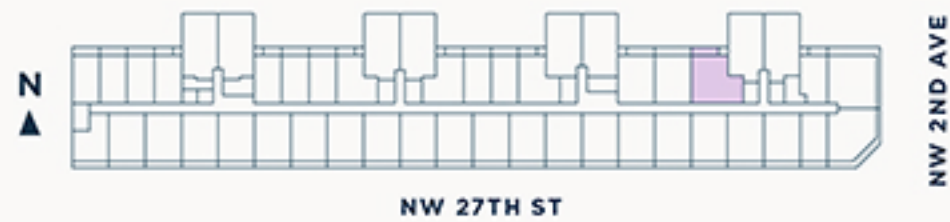




ONE BEDROOM TYPE C

1 Bed | 2 Bath

INTERIOR	806 SF / 75 M2
TERRACE	81 SF / 8 M2
TOTAL	887 SF / 82 M2

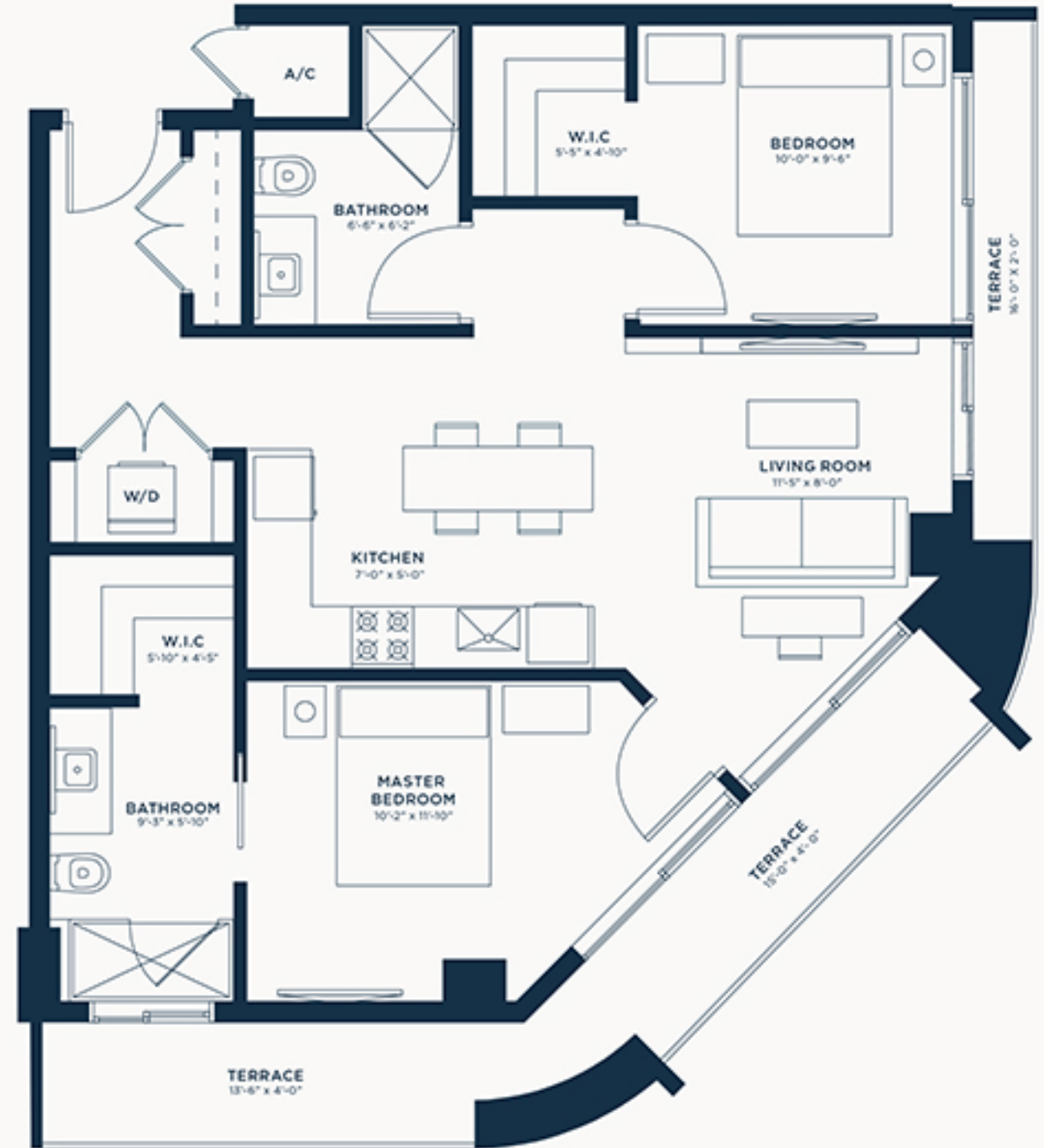
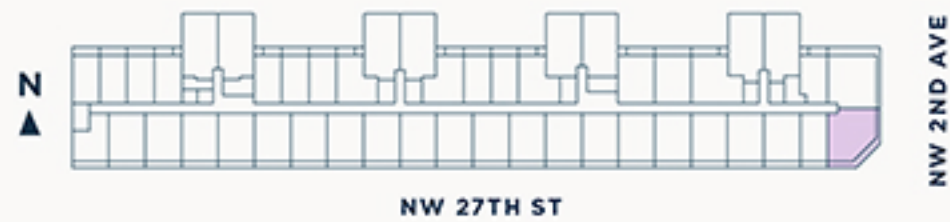




TWO BEDROOM TYPE A

2 Bed | 2 Bath

INTERIOR	830 SF / 77 M2
TERRACE	161 SF / 15 M2
TOTAL	991 SF / 92 M2



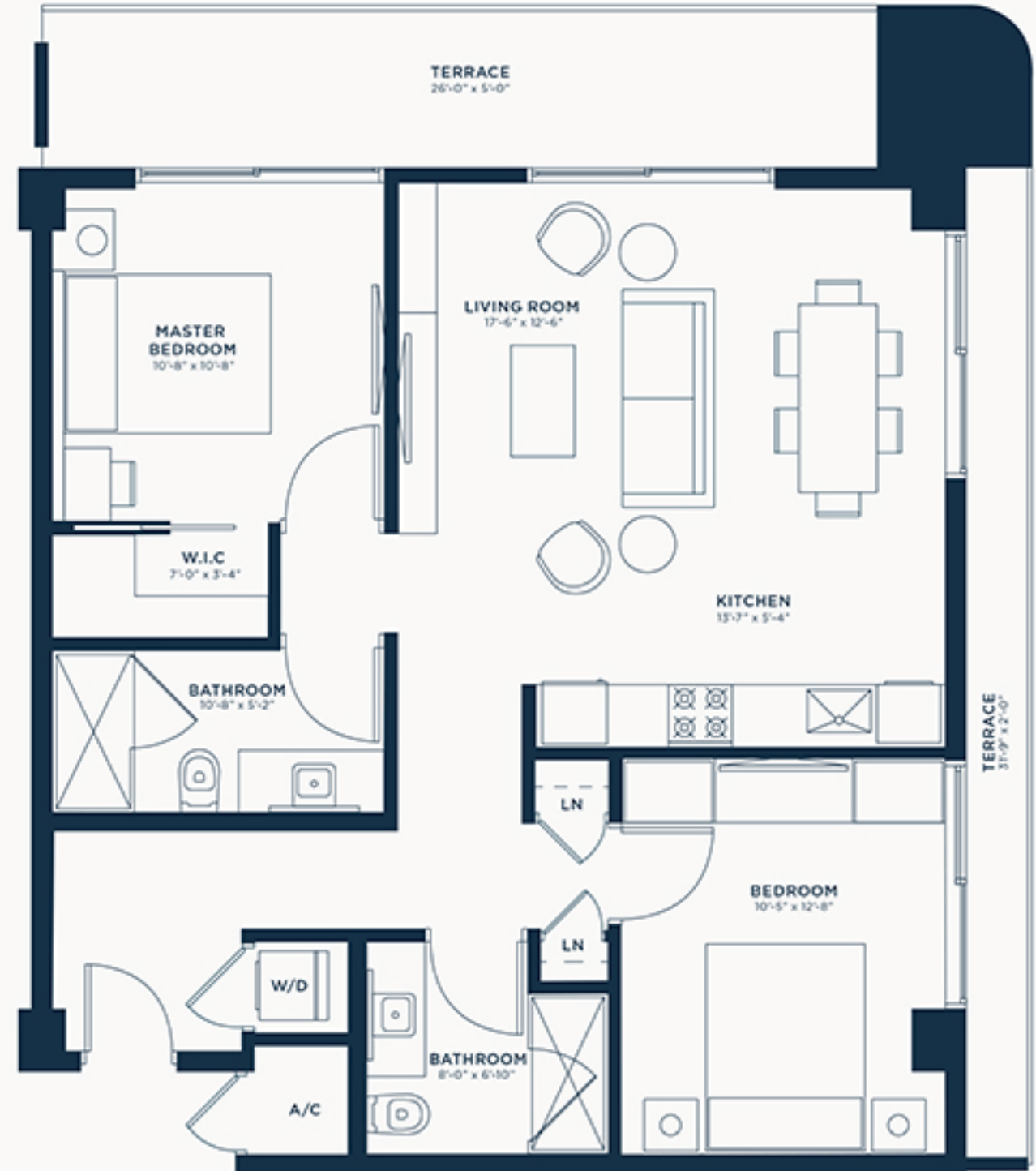
The dimensions stated for this unit floor plan are approximate because there are various recognized methods for calculating the square footage of a unit. The square footage stated here is calculated from the exterior boundaries of the exterior walls to the centerline of interior demising walls without deductions for cutouts, curves, or architectural features. This method typically results in quoted dimensions greater than the dimensions that would be determined by using other accepted methods. The definition of "Unit" and the calculation method to be relied upon is set forth by the Developer, PRH G40 Property Owner, LLC, in Developer's prospectus and the method set forth in the Developer's prospectus may result in a square footage calculation less than the method used here. Consult the Developer's prospectus for information on what is offered with the Unit and the calculation of the Unit square footage and dimensions.



TWO BEDROOM TYPE B

2 Bed | 2 Bath

INTERIOR	931 SF / 86 M2
TERRACE	195 SF / 18 M2
TOTAL	1,126 SF / 105 M2



The dimensions stated for this unit floor plan are approximate because there are various recognized methods for calculating the square footage of a unit. The square footage stated here is calculated from the exterior boundaries of the exterior walls to the centerline of interior demising walls without deductions for cutouts, curves, or architectural features. This method typically results in quoted dimensions greater than the dimensions that would be determined by using other accepted methods. The definition of "Unit" and the calculation method to be relied upon is set forth by the Developer, PBN G40 Property Owner, LLC, in Developer's prospectus and the method set forth in the Developer's prospectus may result in a square footage calculation less than the method used here. Consult the Developer's prospectus for information on what is offered with the Unit and the calculation of the Unit square footage and dimensions.

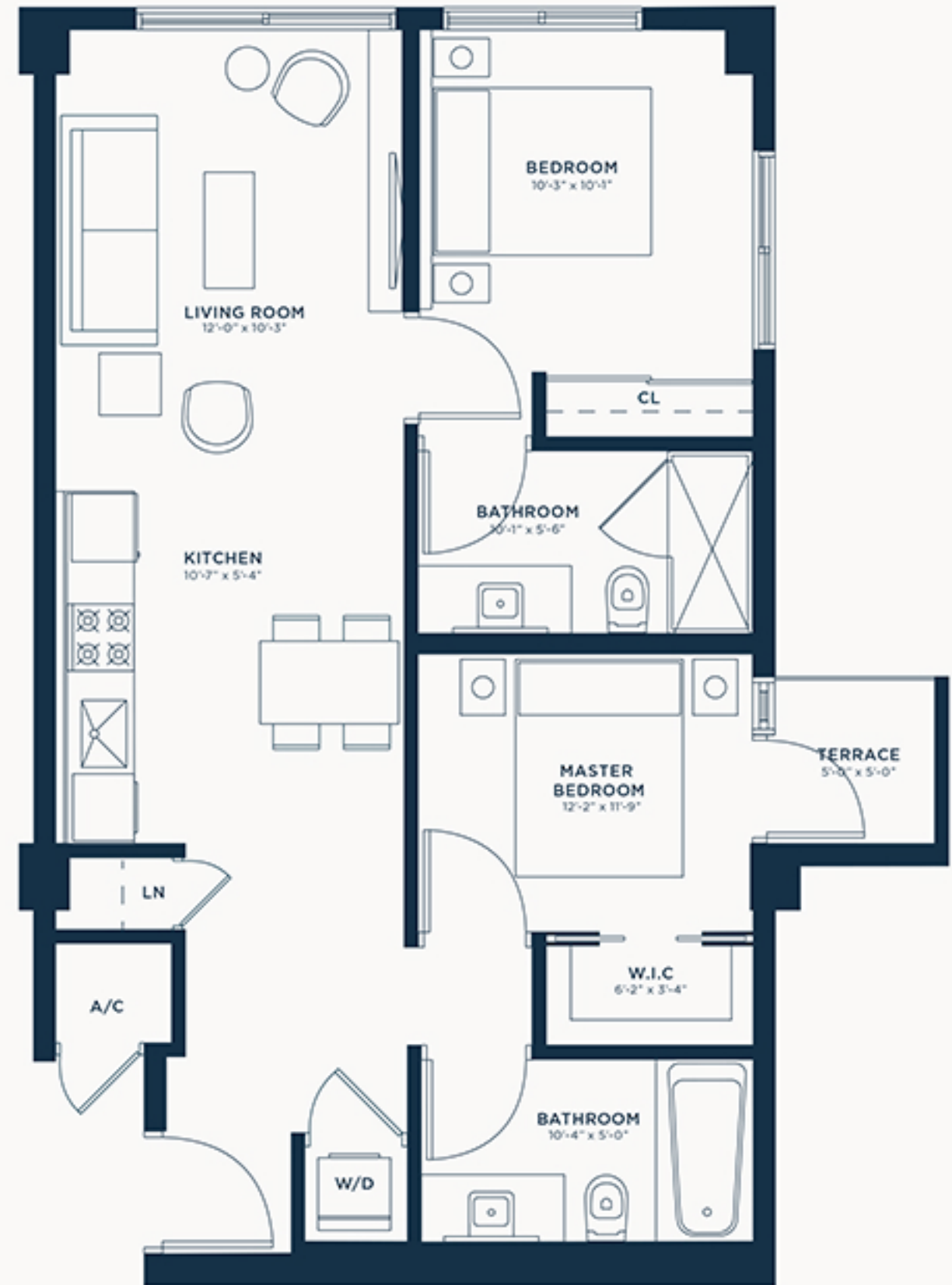
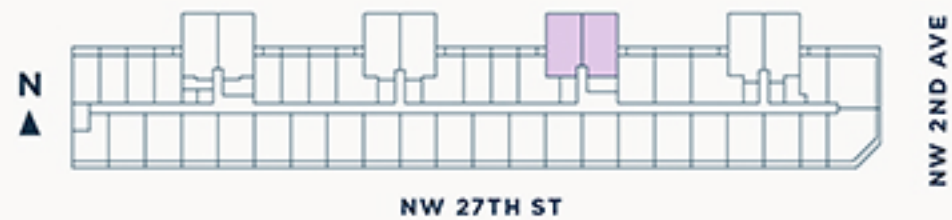




TWO BEDROOM TYPE C

2 Bed | 2 Bath

INTERIOR 804 SF / 75 M2
TERRACE 25 SF / 2 M2
TOTAL 829 SF / 77 M2



The dimensions stated for this unit floor plan are approximate because there are various recognized methods for calculating the square footage of a unit. The square footage stated here is calculated from the exterior boundaries of the exterior walls to the centerline of interior demising walls without deductions for cutouts, curves, or architectural features. This method typically results in quoted dimensions greater than the dimensions that would be determined by using other accepted methods. The definition of "Unit" and the calculation method to be relied upon is set forth by the Developer, PBN G40 Property Owner, LLC, in Developer's prospectus and the method set forth in the Developer's prospectus may result in a square footage calculation less than the method used here. Consult the Developer's prospectus for information on what is offered with the Unit and the calculation of the Unit square footage and dimensions.



TWO BEDROOM TYPE C2

2 Bed | 2 Bath

INTERIOR 840 SF / 78 M2
TERRACE 25 SF / 2 M2
TOTAL 865 SF / 80 M2



The dimensions stated for this unit floor plan are approximate because there are various recognized methods for calculating the square footage of a unit. The square footage stated here is calculated from the exterior boundaries of the exterior walls to the centerline of interior demising walls without deductions for cutouts, curves, or architectural features. This method typically results in quoted dimensions greater than the dimensions that would be determined by using other accepted methods. The definition of "Unit" and the calculation method to be relied upon is set forth by the Developer, PBN G40 Property Owner, LLC, in Developer's prospectus and the method set forth in the Developer's prospectus may result in a square footage calculation less than the method used here. Consult the Developer's prospectus for information on what is offered with the Unit and the calculation of the Unit square footage and dimensions.