

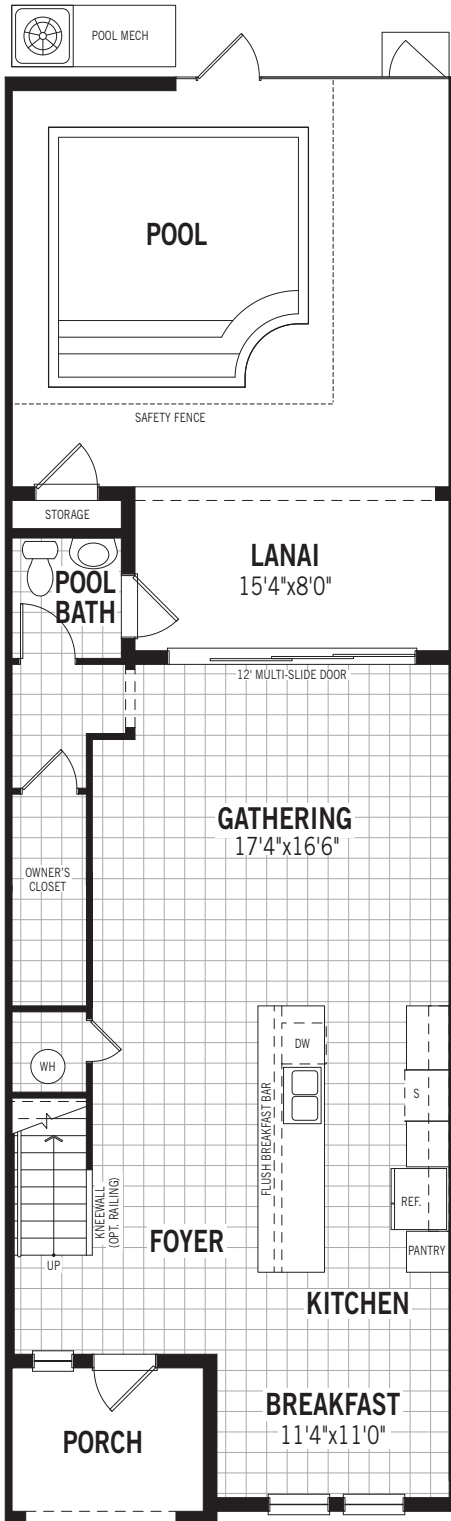
TOWNHOMES

BAYSIDE

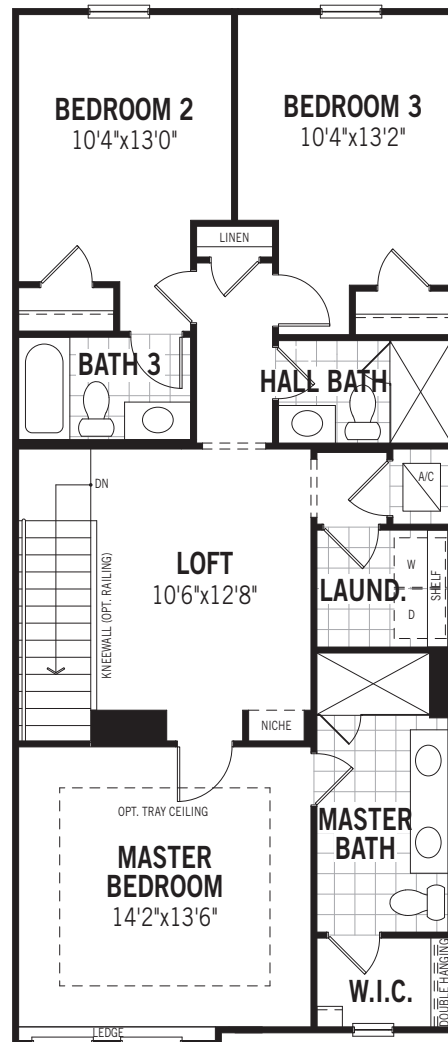
1,962 SQ.FT.
179 SQ.M.



3 BED + LOFT • 3.5 BATH



GROUND FLOOR



SECOND FLOOR

BAYSIDE



TOWNHOMES

CLEARWATER

2,090 SQ.FT.
194 SQ.M.

MEDITERRANEAN



MODERN



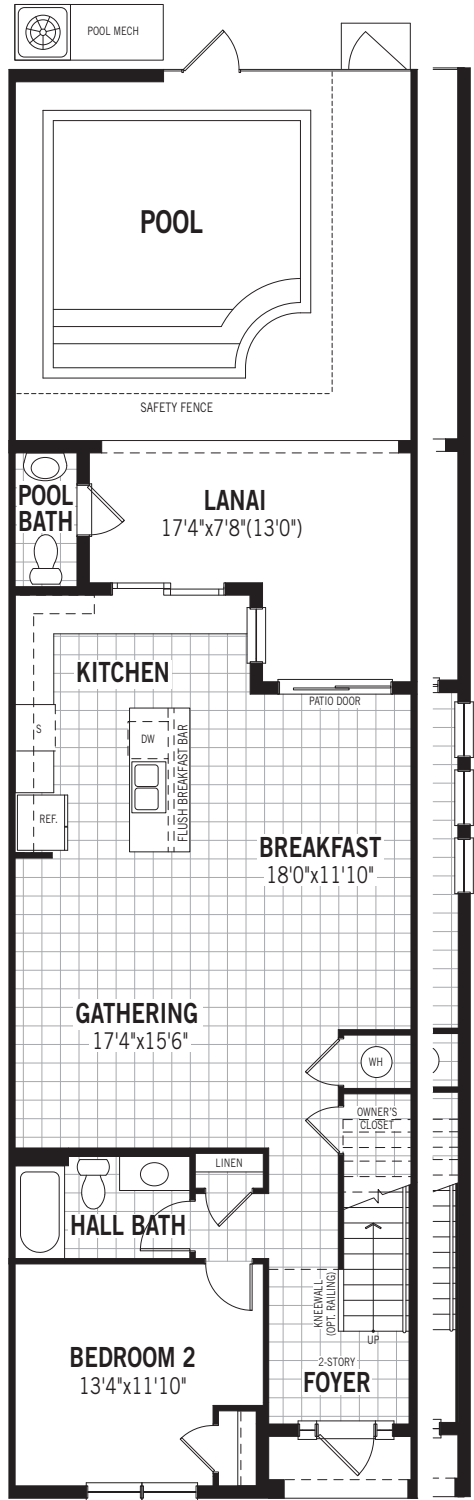
COASTAL



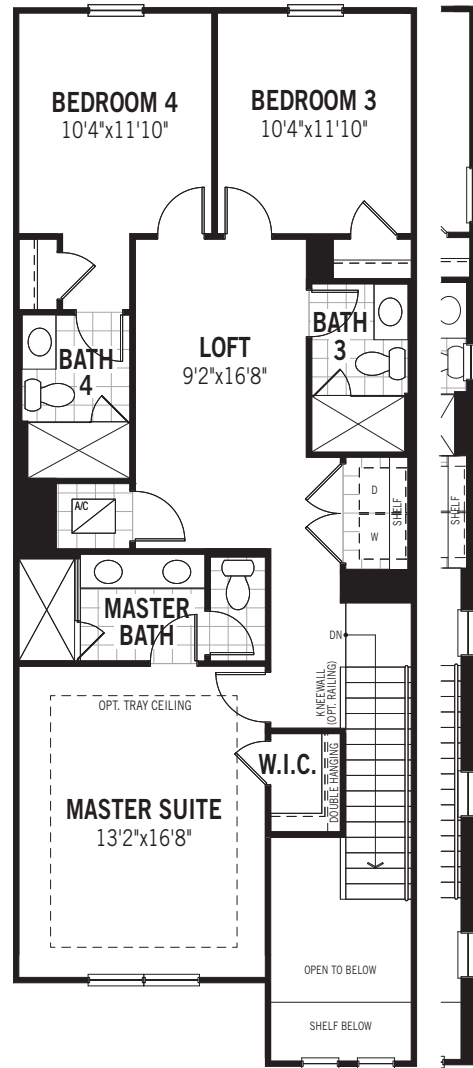
FLORIDA TRADITIONAL



4 BED + LOFT • 4.5 BATH



GROUND FLOOR



SECOND FLOOR

CLEARWATER



All plan illustrations are artist's concept and are not part of a legal contract. Specifications, terms and conditions are subject to change without notice. These floor plans and room dimensions apply to elevation "Mediterranean" of this model type. Note that plan square footages and room dimensions may vary according to elevation and options selected. Plan may be built as the mirror image. Flooring illustrations are used to show area of flooring, actual flooring type is specified on the Community Feature Sheet. Please consult your New Home Counselor for more details. E.&O.E. June 2019. Copyright 2019 - Mattamy Homes Limited. Builder's License CGC1512500. Reprint June 2019.

TOWNHOMES

DEL RAY

2,294 SQ.FT.
213 SQ.M.

FLORIDA TRADITIONAL



MODERN



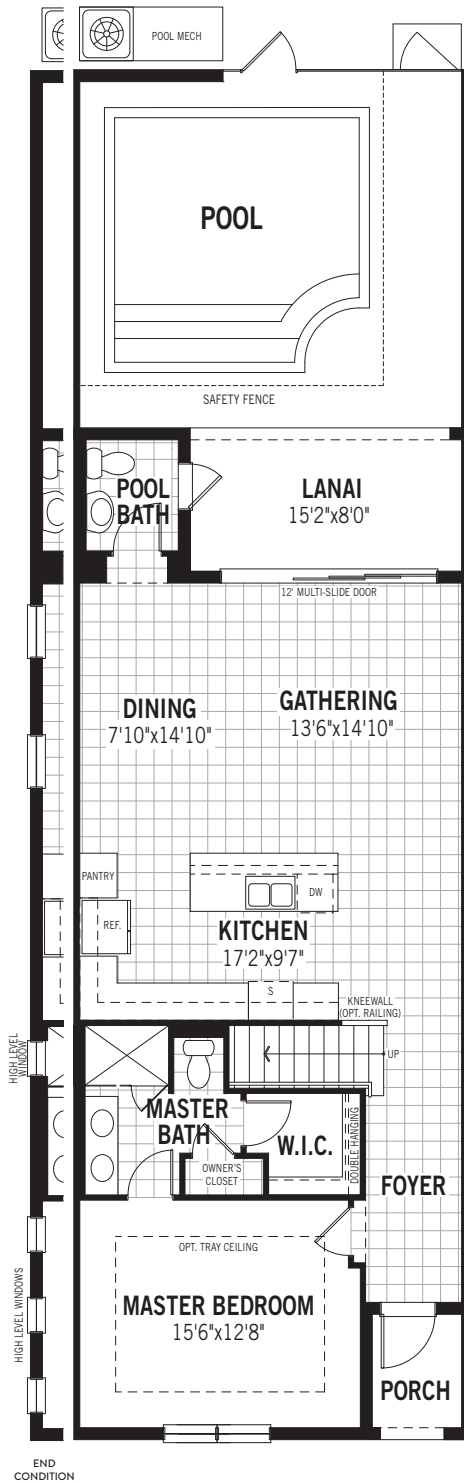
COASTAL



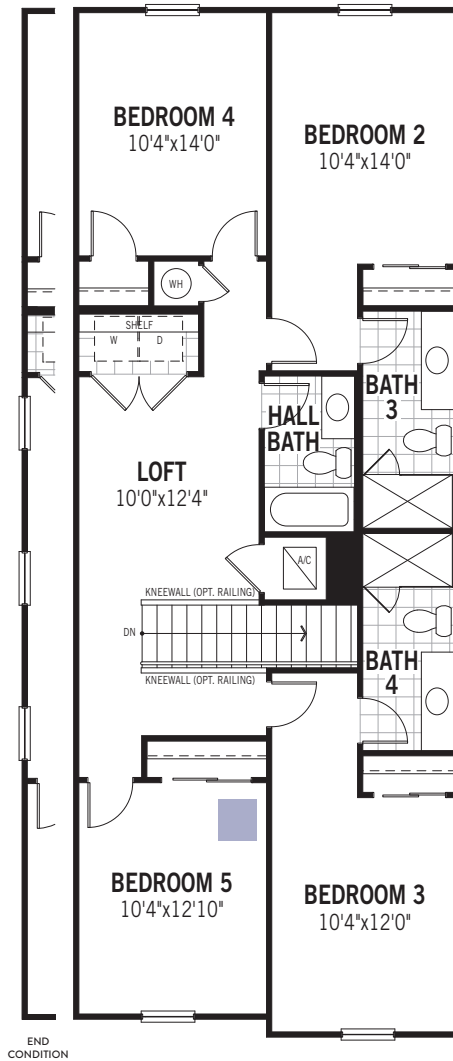
MEDITERRANEAN



5 BED + LOFT • 4.5 BATH



GROUND FLOOR



SECOND FLOOR



DEL RAY

All plan illustrations are artist's concept and are not part of a legal contract. Specifications, terms and conditions are subject to change without notice. These floor plans and room dimensions apply to elevation "Florida Traditional" of this model type. Note that plan square footages and room dimensions may vary according to elevation and options selected. Plan may be built as the mirror image. Flooring illustrations are used to show area of flooring, actual flooring type is specified on the Community Feature Sheet. Please consult your New Home Counselor for more details. E.&O.E. June 2019. Copyright 2019 - Mattamy Homes Limited. Builder's License #CG1523142. Reprint June 2019